

Remote HF Ham Ops

Bruce Brown WA9GVK

January 9, 2024



Agenda



- **Why operate remotely?**
- **Three Approaches w/ Diagrams & Video Demo**
 - Remote Rig App on remote computer; no computer at home QTH
 - **(1) ICOM RS-BA1 - Popular ICOM app but difficult to set up; voice & CW only**
 - **(2) SDR-Control - Easy-to-use app for select ICOM rigs; for voice, CW, data; Mac, iPad, iPhone**
 - Remote Desktop App on remote computer; uses computer at home QTH; universal rig application
 - **(3) Splashtop desktop app with dedicated Windows PC at home QTH**

Introduction



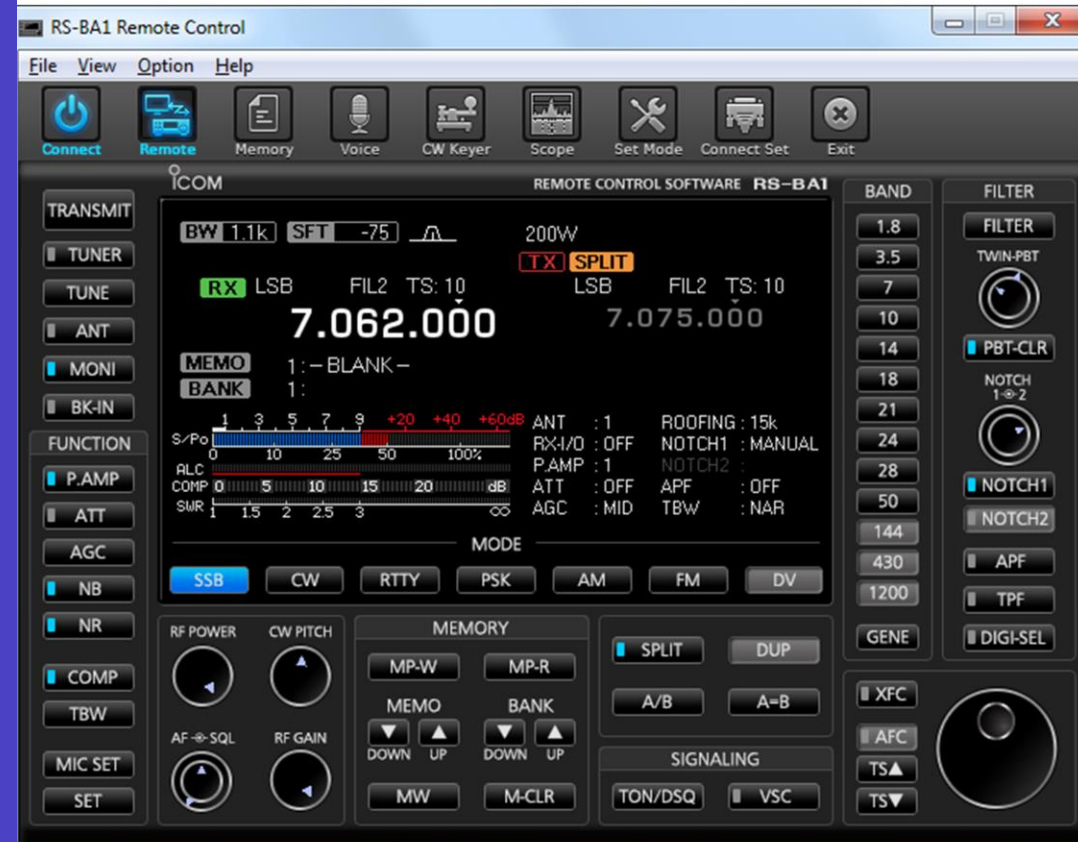
Remote HF Ham Ops

- **Why?**
 - Vacation
 - Desire to operate in different room in house
 - 2nd Home with HOA restrictions
 - Field operations and contesting
 - Demonstrations away from home QTH (e.g., schools, shopping malls, etc)
 - Mobile ops
- **Credits:** Some ideas extracted from "Remote Stations" by Paul Sobon NO0T and William Thomas WT0DX; Madison DX Club.

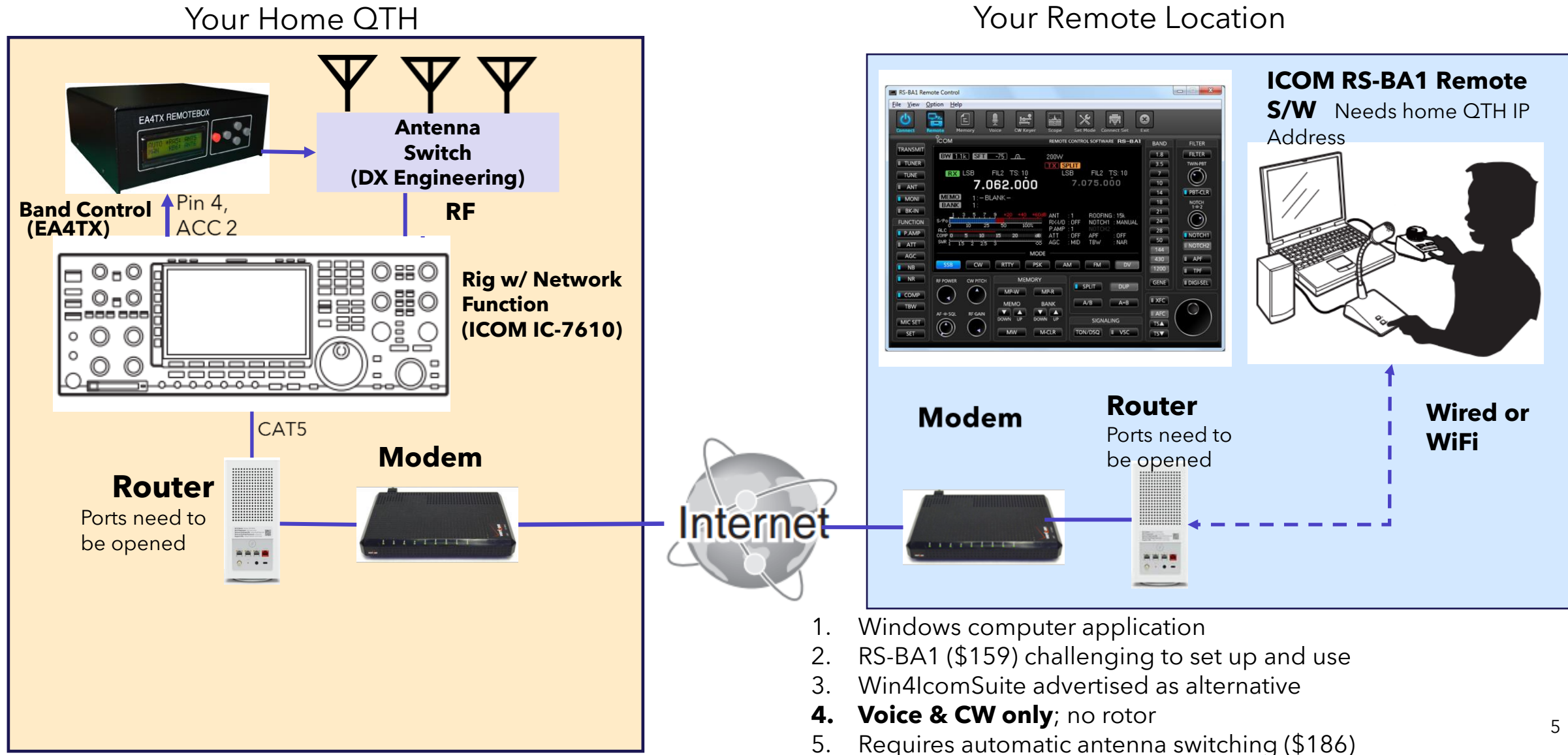
http://www.madisondxclub.org/Remote_Station_MDXC_%20v1-1.pdf³

(1) ICOM RS-BA1

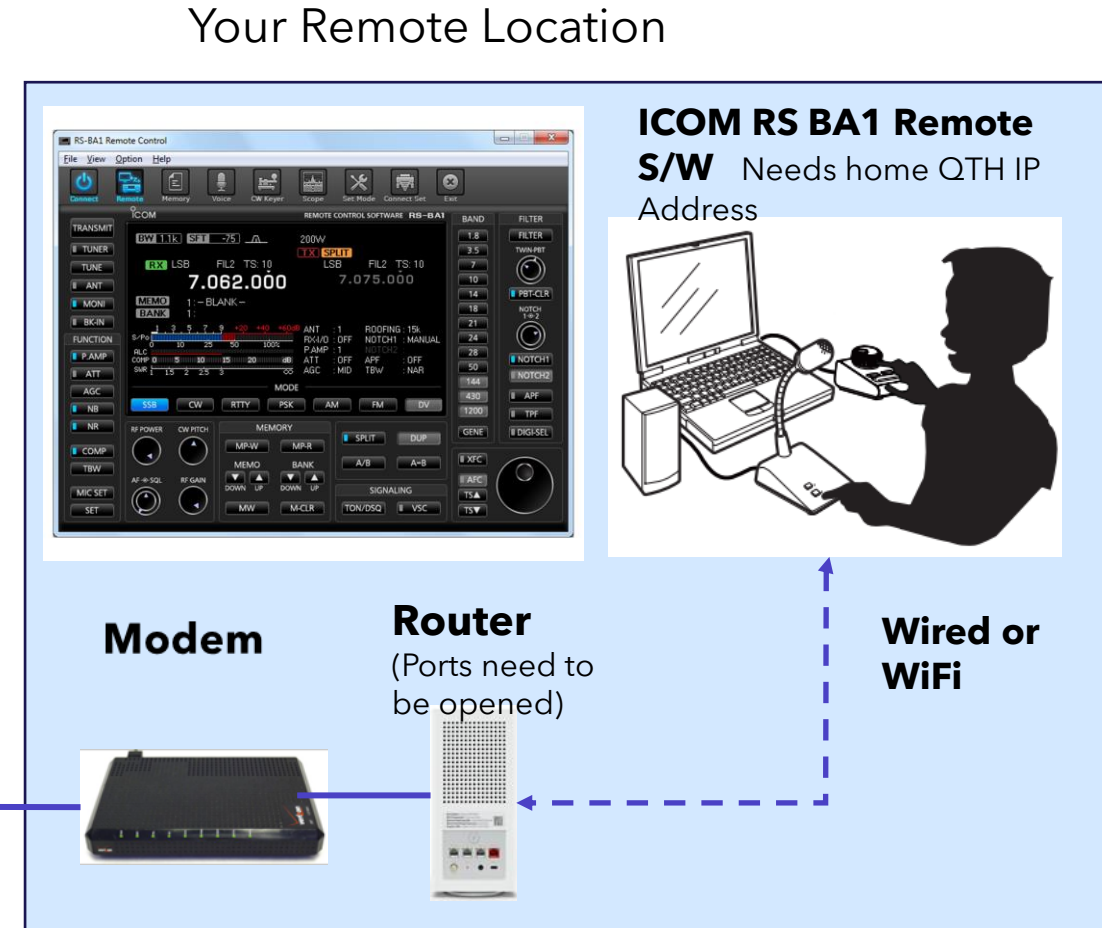
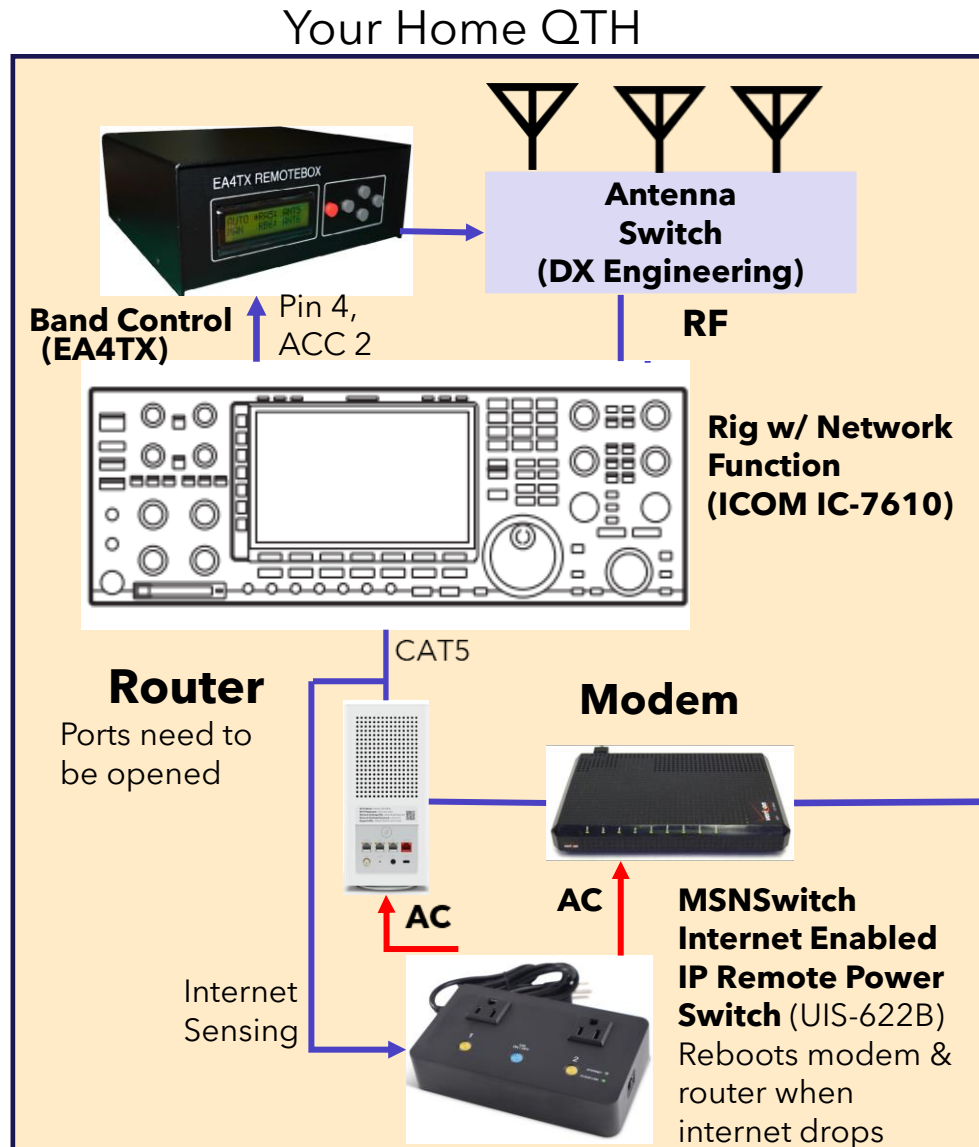
1. Using rig's manufacturer remote desktop software for voice & CW ops;
2. Automatic method to switch antennas at home QTH;
3. Automatic reboot QTH home network.



(1) Remote Voice/CW Operations (using ICOM IC-7610 w/ RS-BA1 Software) - Basic Wiring

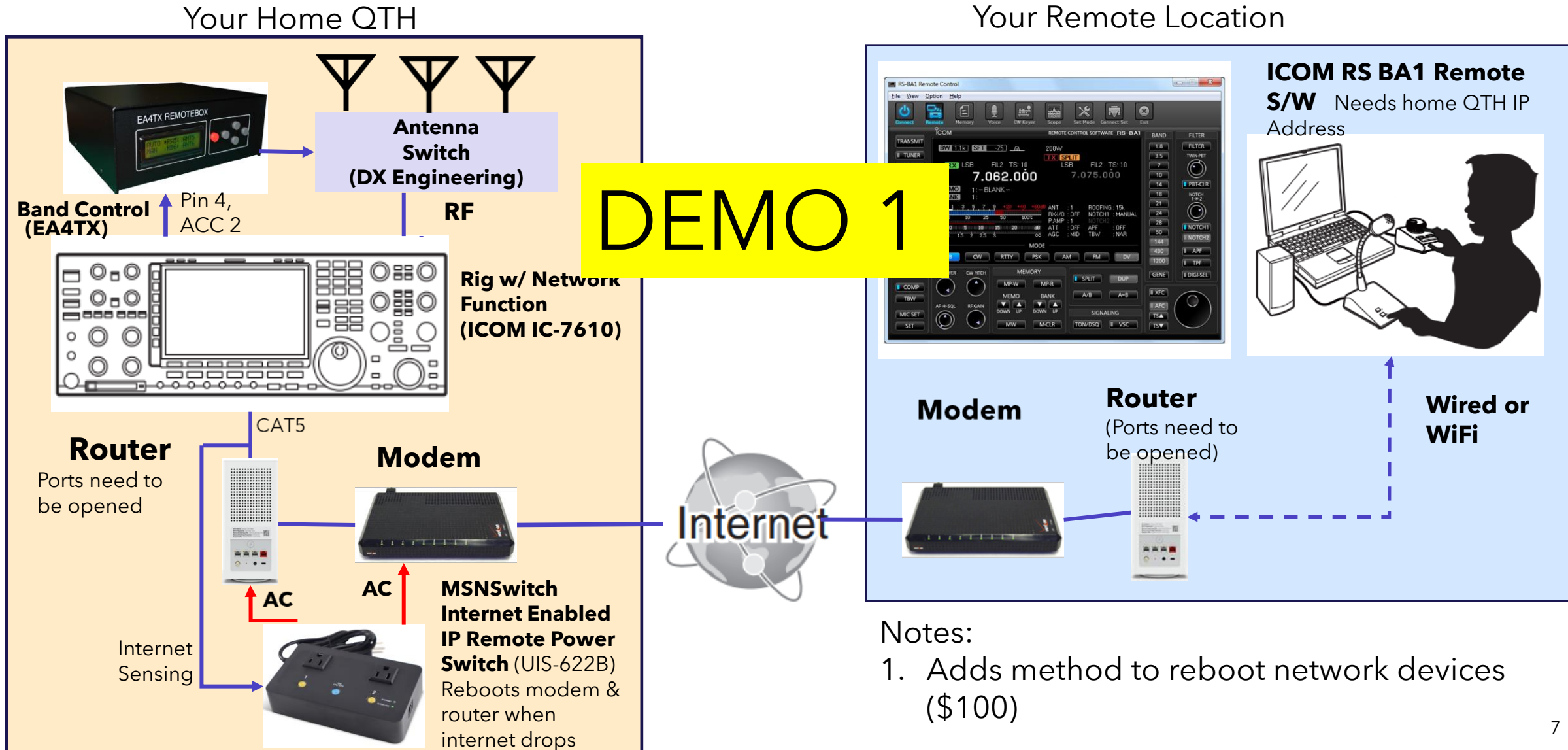


(1) Remote Voice/CW Operations (using ICOM IC-7610 w/ RS-BA1 Software)



- Notes:
1. Adds method to reboot network devices (\$100)

(1) Remote Voice Operations (using ICOM IC-7610 w/ RS-BA1 Software)

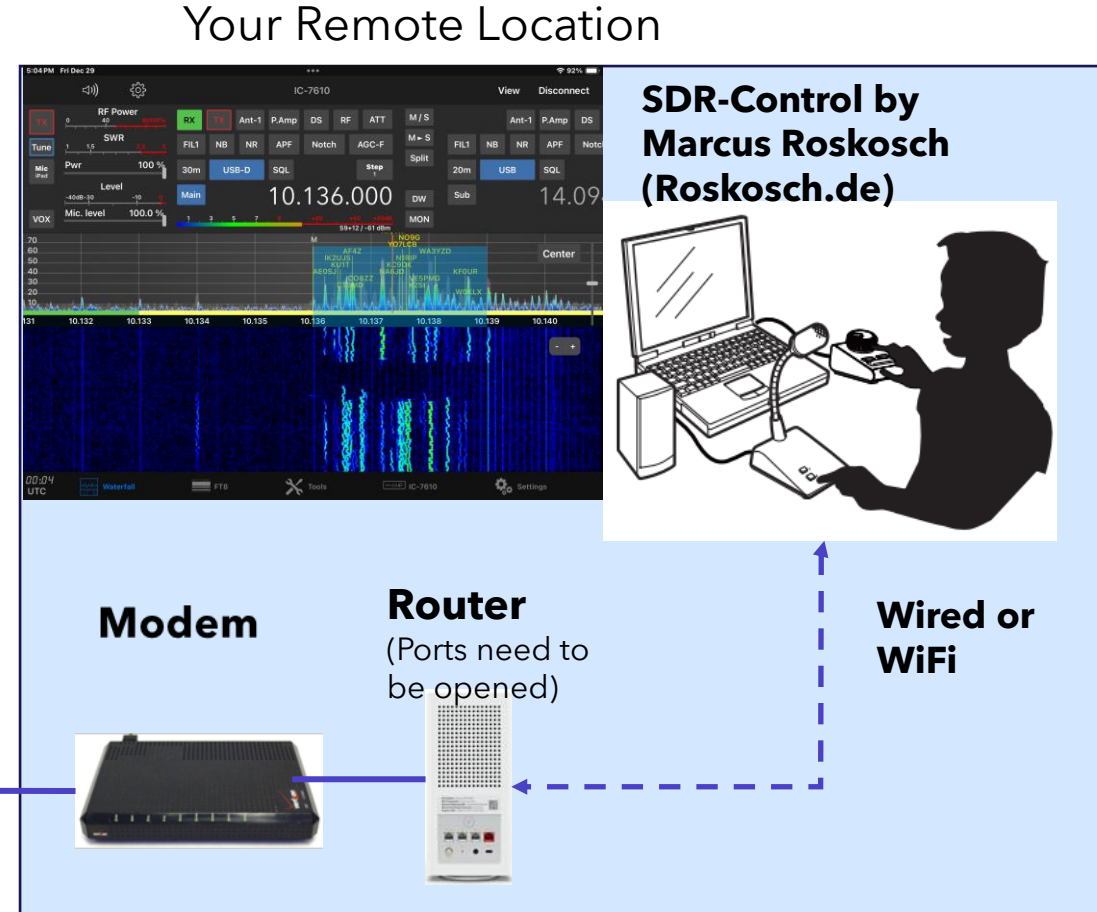
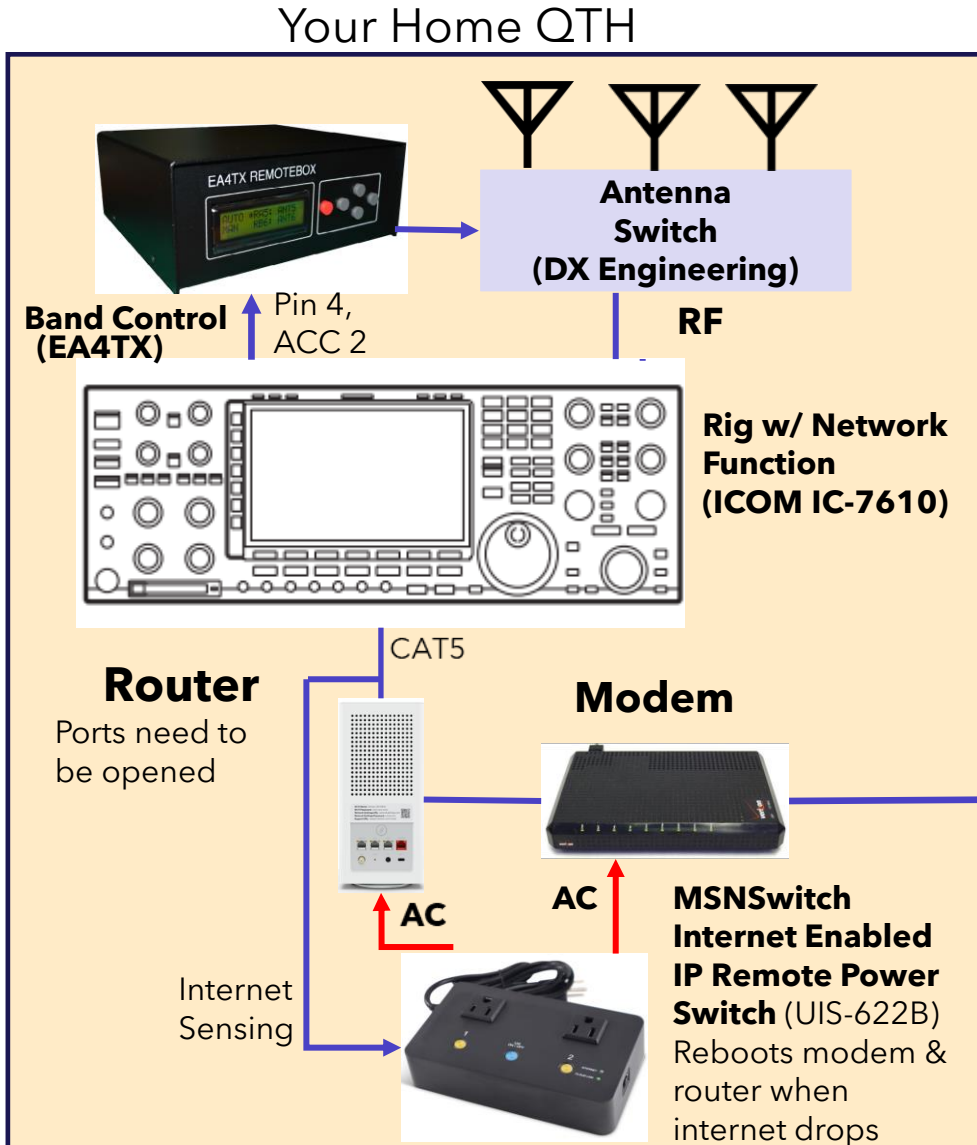


(2) SDR-Control App

- Easy-to-use app for Voice, CW and Data;
- For Mac OS and iOS Products
- Automatic method to switch antennas at home QTH;
- Automatic reboot QTH home network.

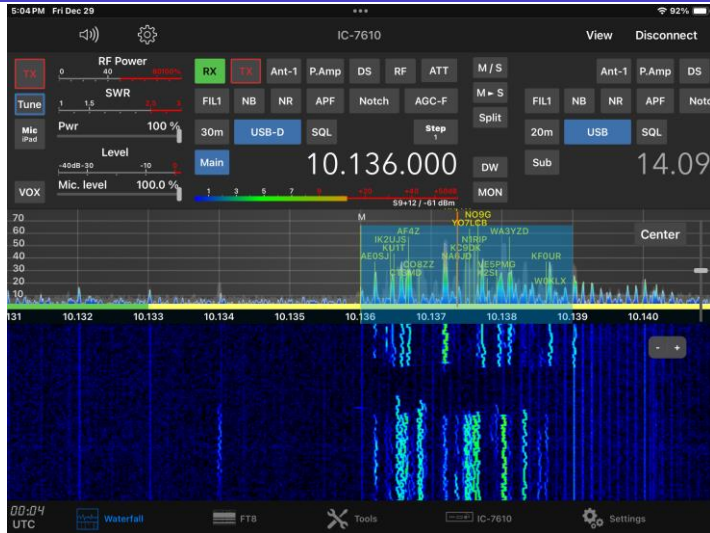


(2) Remote Operations (using SDR-Control)



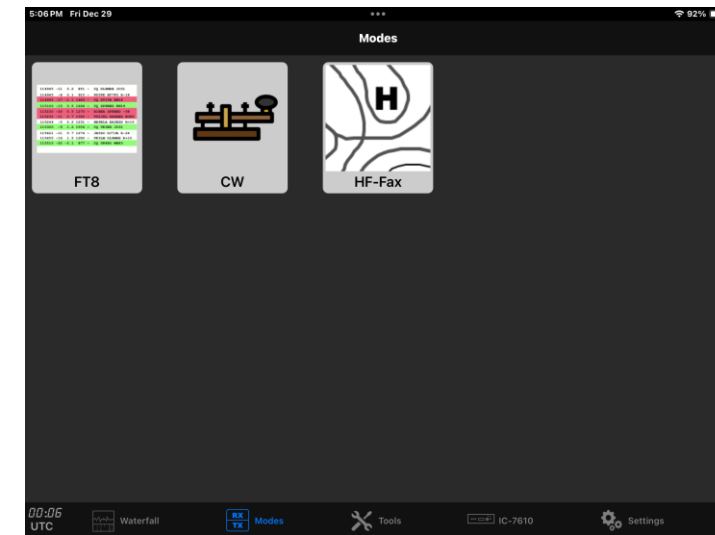
1. Mac based - iPad, iPhone, MacBook, iMac
2. For Voice, CW and Data
3. Flex Radio and ICOM IC-7610, IC-705, IC-9700, & IC-7300 for iMac or MacBook via USB cable
4. Lots of valuable ham S/W tools included
5. **Very easy to setup and use**
6. **Will even work on cellular (except for CW)**

(2) Sample SDR-Control Screens on iPad

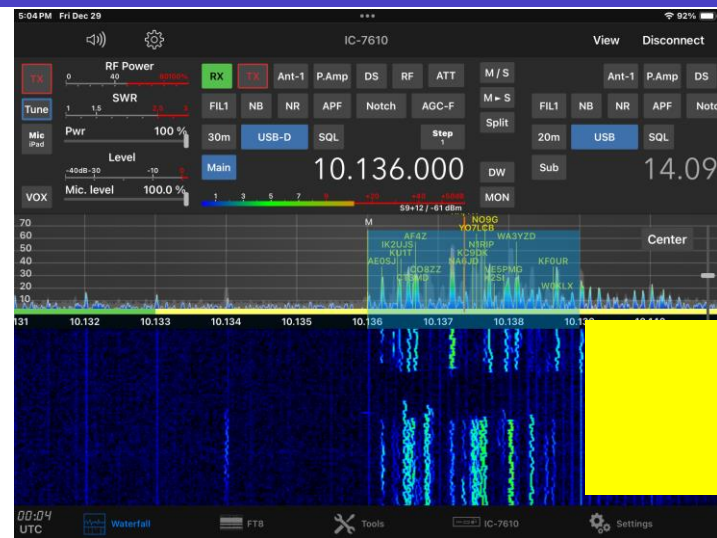


This screenshot shows the SDR-Control interface with the Modes screen. The top bar indicates the time as 5:05 PM on Friday, December 29, and the battery level at 92%. The interface includes a 'Map' button and a 'Settings' button. The main display area shows a list of modes and their parameters. The modes are listed in a table with columns for RX, TX, and various parameters. The modes are: WJ4K NO9G -3 (USA (IL)), W4PPC KC9DK EM68 (USA (IN)), CQ VE5PMG DO70 (Canada), VE3PKY K4RKP R-24 (USA), KB3IHK IK2XDE JN45 (Italy (CO)), CQ KF0UR DM78 (USA (CO)), and CE2EC VE2UC 73 (Canada). The bottom bar shows the time as 00:05 UTC and the mode as FT8.

RX	TX	Mode	Country
000500	-4 0.6 1663	WJ4K NO9G -3	USA (IL)
000500	-7 0.5 1738	W4PPC KC9DK EM68	USA (IN)
000500	-23 1 1928	CQ VE5PMG DO70	Canada
000500	9 0.5 2024	VE3PKY K4RKP R-24	USA
000500	-10 0.3 2319	KB3IHK IK2XDE JN45	Italy (CO)
000500	-18 0.5 2494	CQ KF0UR DM78	USA (CO)
000500	-9 -0.3 2526	CE2EC VE2UC 73	Canada



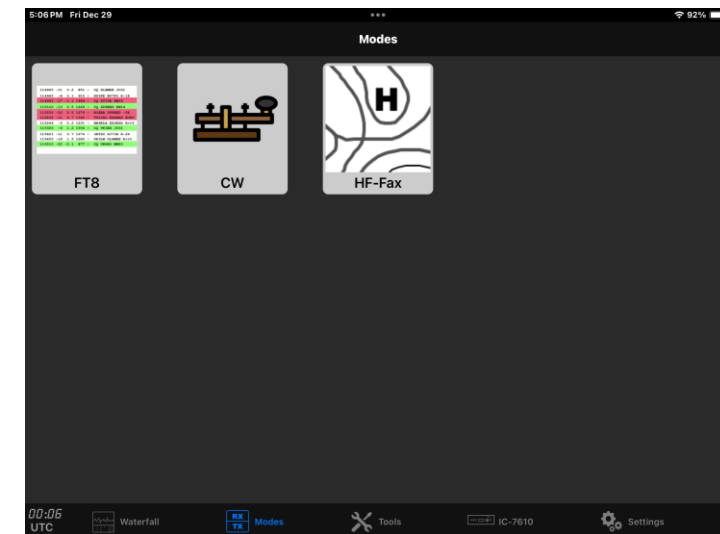
(2) Sample SDR-Control Screens on iPad



This screenshot shows the 'Modes' screen. It lists various modes and their frequencies. The modes are: FT8, FT4, and Auto. The list includes call signs and frequencies, such as 'WJ4K NO9G -3', 'W4PPC KC9DK EM68', 'CQ VE5PMG DO70', 'VE3PKY K4RKP R-24', 'KB3IHX IK2XDE JN45', 'CQ KF0UR DM78', and 'CE2EC VE2UC 73'.

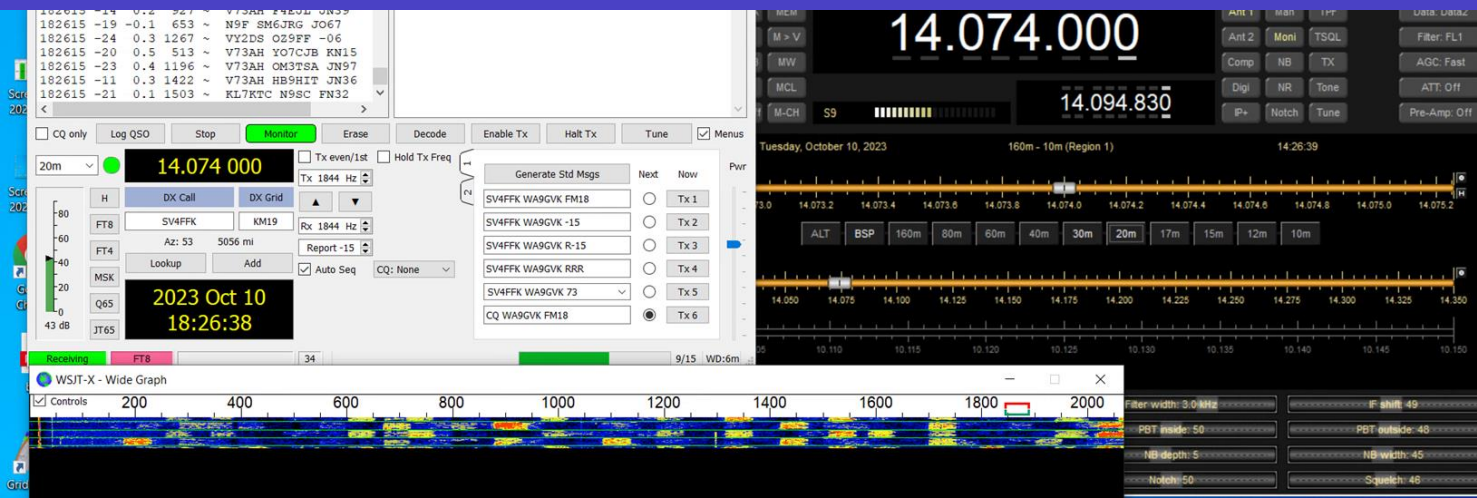
Mode	Frequency	Call Sign	Location
FT8	30m (10136.0 kHz)	WJ4K NO9G -3	USA (IL)
FT8	30m (10136.0 kHz)	W4PPC KC9DK EM68	USA (IN)
FT8	30m (10136.0 kHz)	CQ VE5PMG DO70	Canada
FT8	30m (10136.0 kHz)	VE3PKY K4RKP R-24	USA
FT8	30m (10136.0 kHz)	KB3IHX IK2XDE JN45	Italy (CO)
FT8	30m (10136.0 kHz)	CQ KF0UR DM78	USA (CO)
FT8	30m (10136.0 kHz)	CE2EC VE2UC 73	Canada

Demo 2



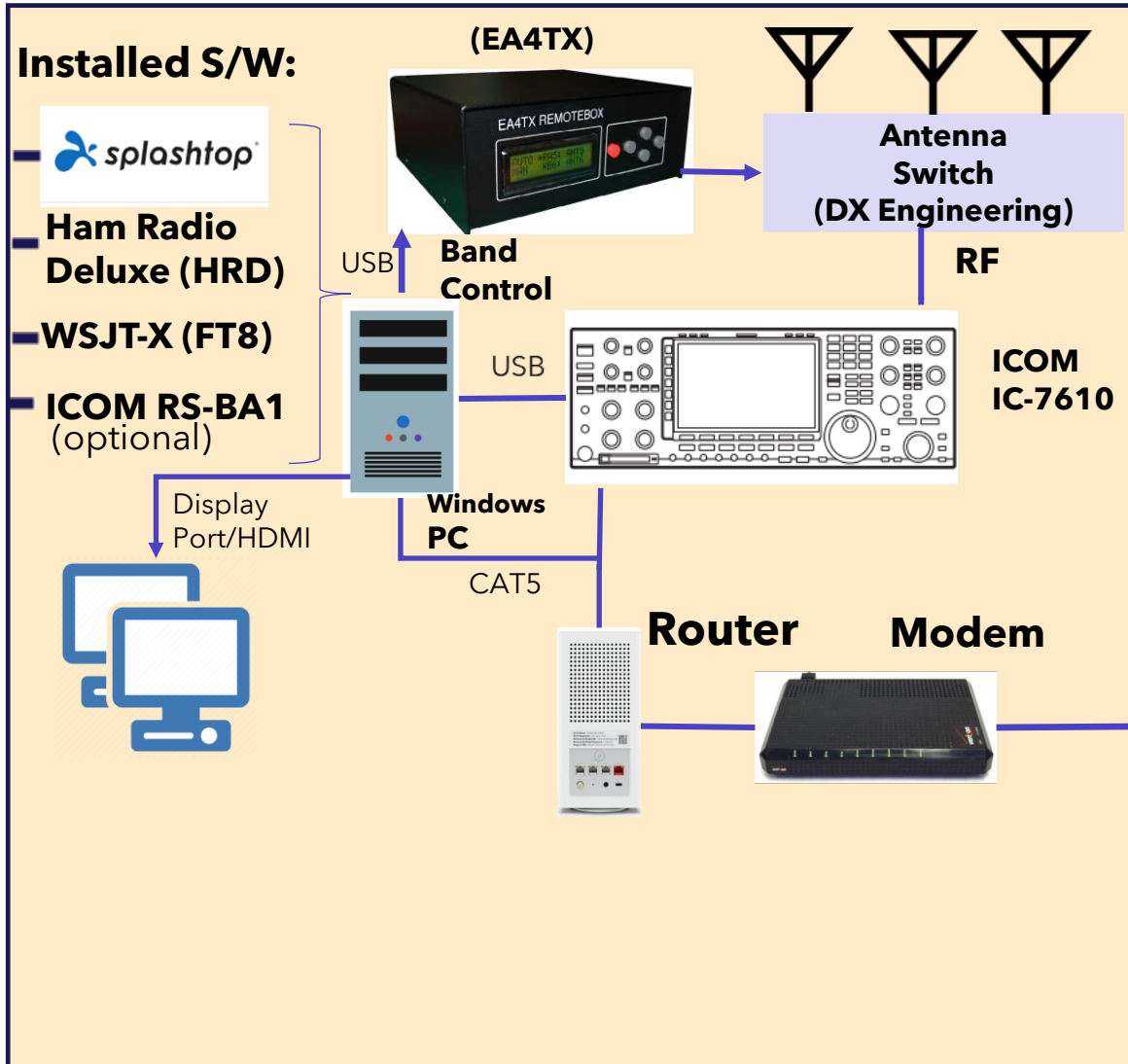
(3) Universal All-Mode Approach

1. Add dedicated Windows desktop computer with all ham apps installed at home QTH; Provides a level of security and ability to reboot.
2. Uses remote desktop sharing software to view and control QTH desktop computer from remote location.
3. Add method to remotely reboot desktop computer in the event of a software freeze
4. Set desktop computer BIOS to bypass front switch on application of AC power.

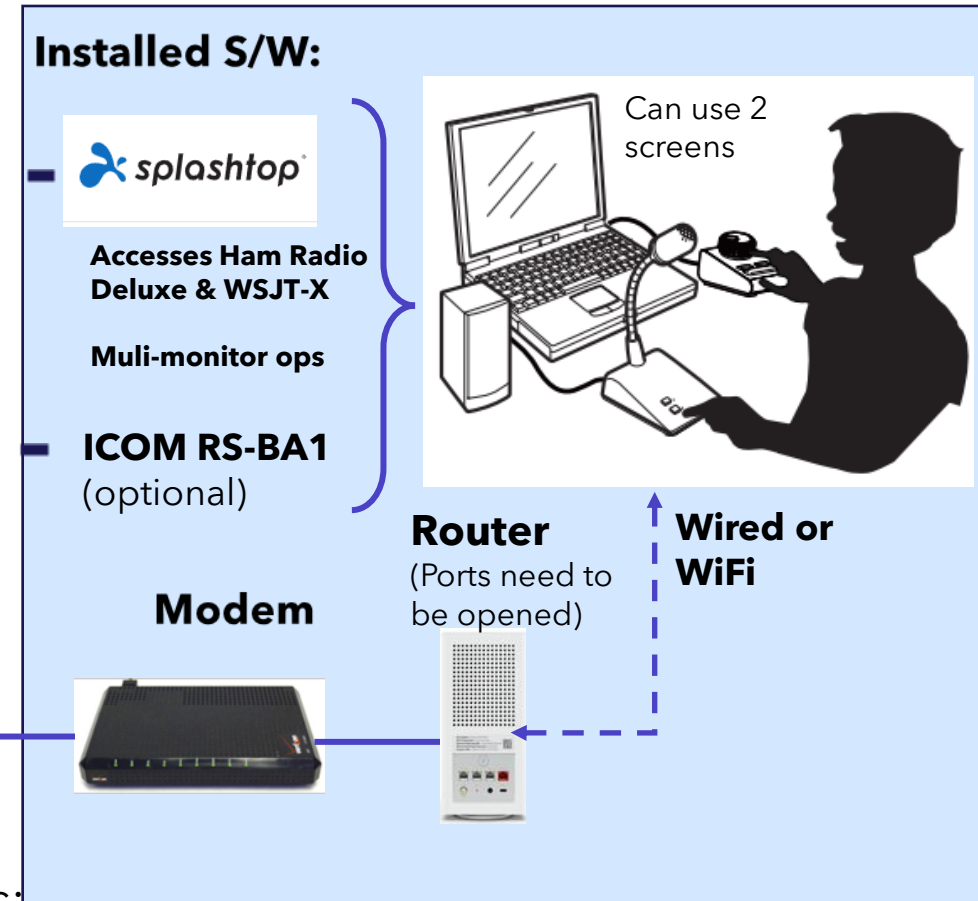


(3) Remote All-Mode Ops - Basic Wiring

Your Home QTH



Your Remote Location

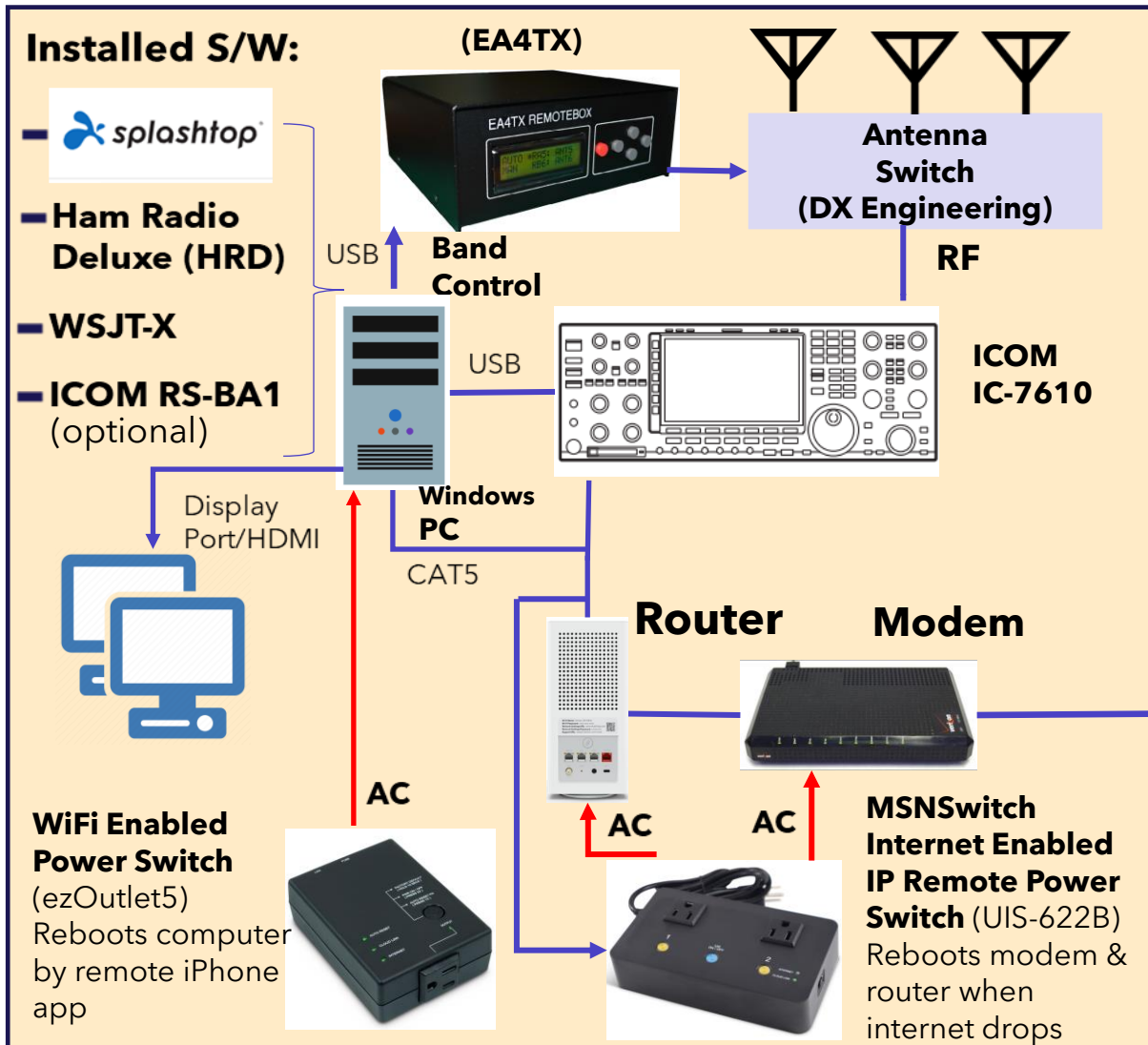


Notes:

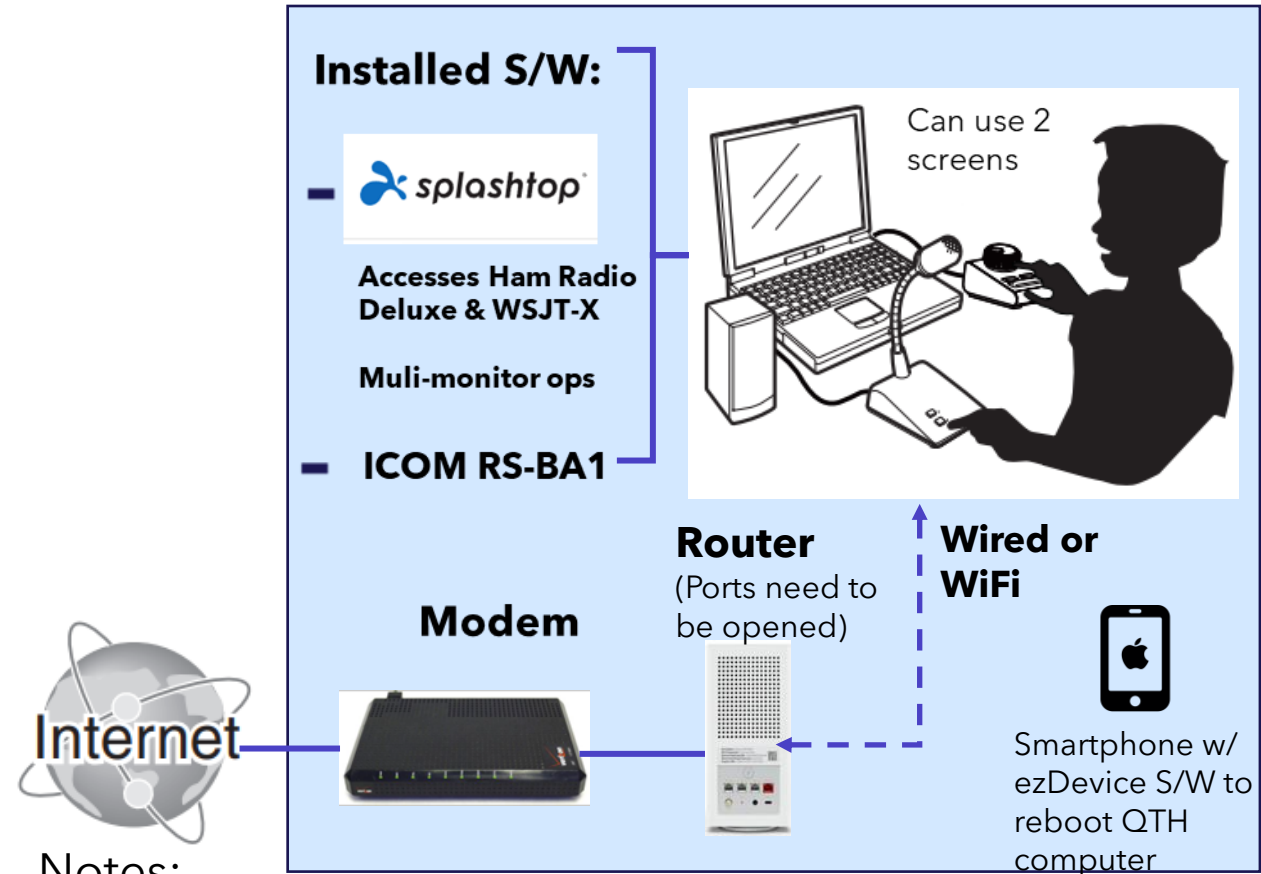
1. Windows solution; Remote location "sees" home QTH PC
2. Digital ops via Ham Radio Deluxe & WSJT-X
3. Voice ops via ICOM RS-BA1, HRD DM-780, or 3rd Party S/W
4. Desktop computer & monitors added to QTH

(3) Remote All-Mode Operations

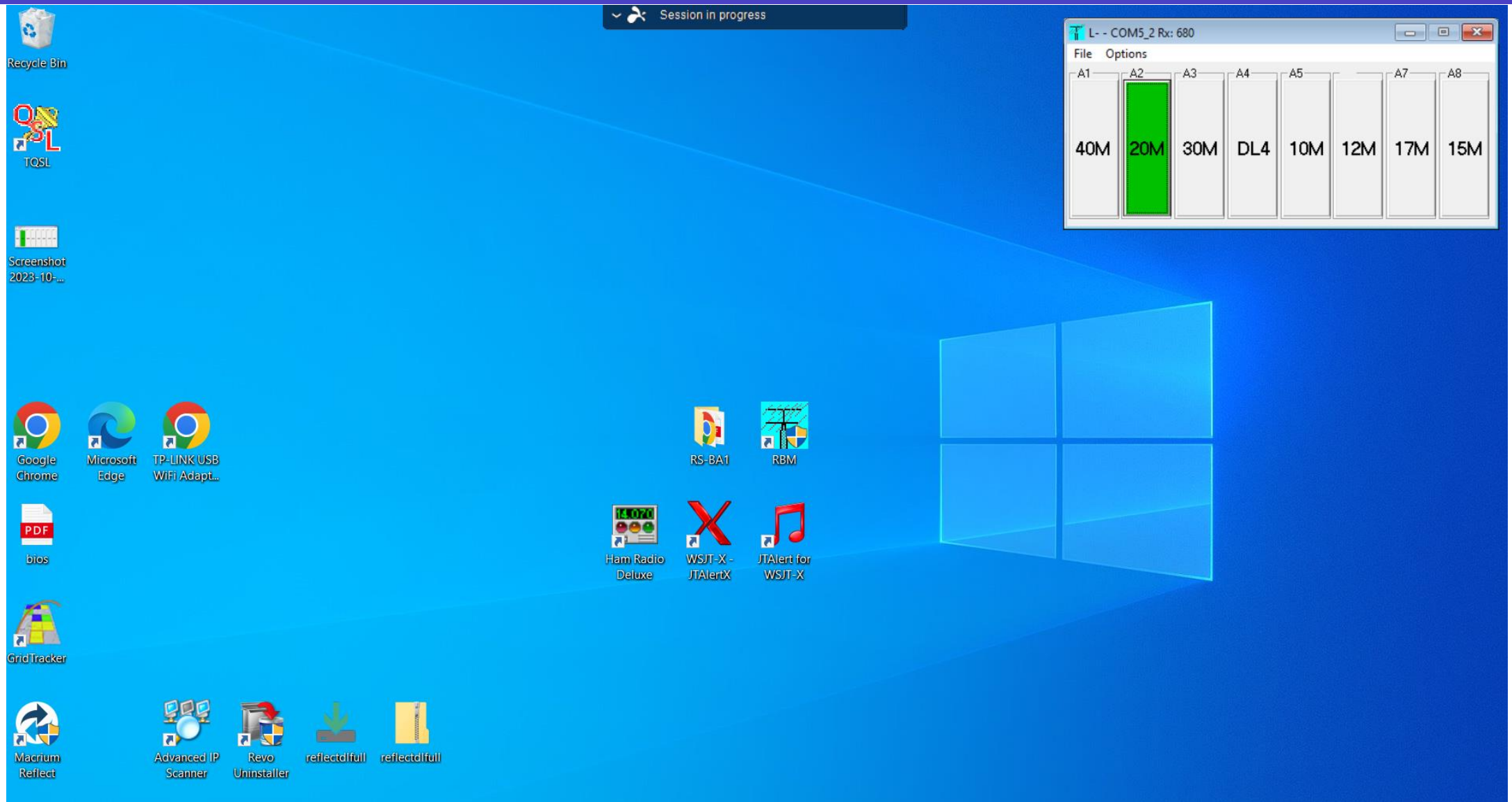
Your Home QTH



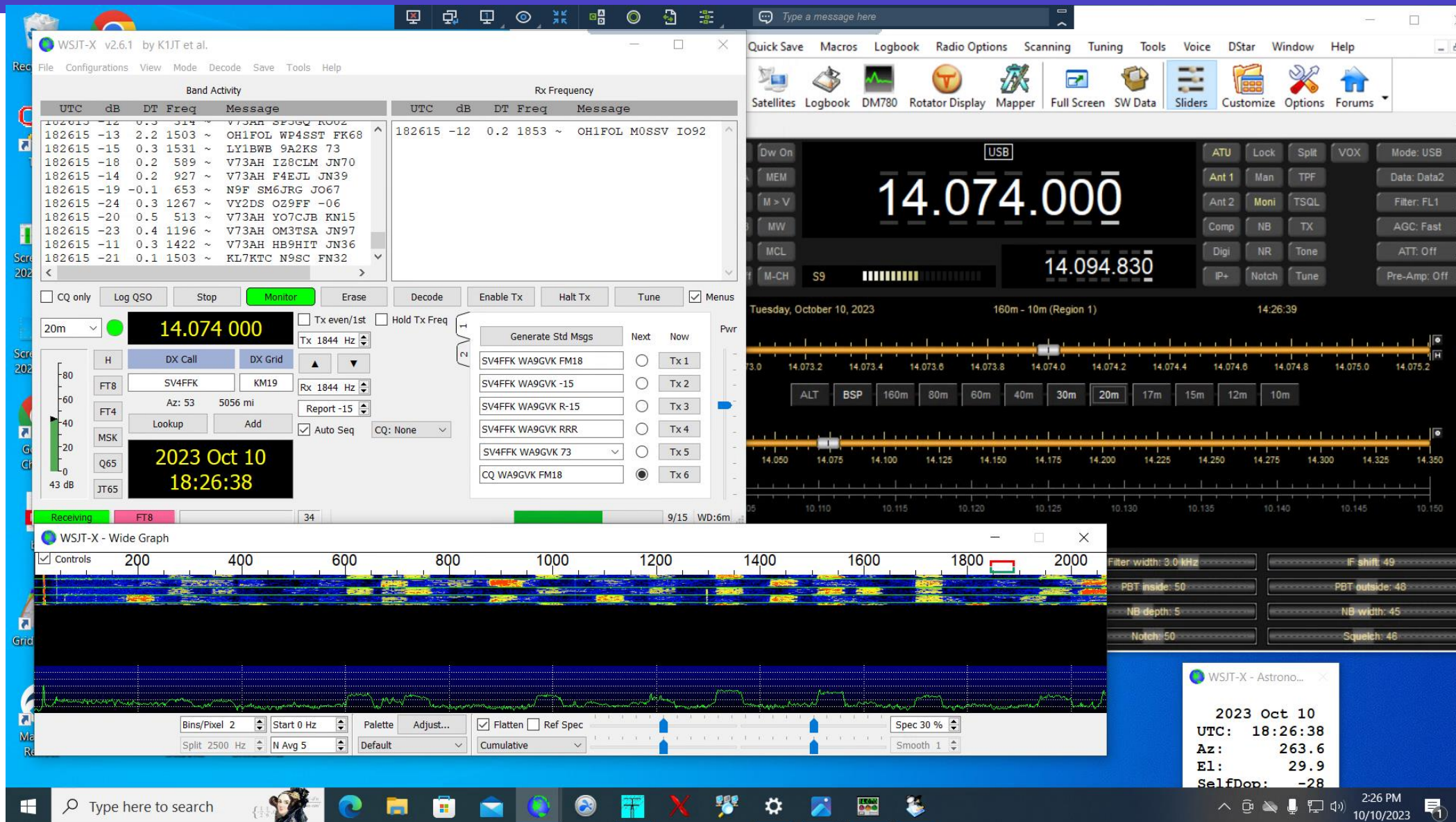
Your Remote Location



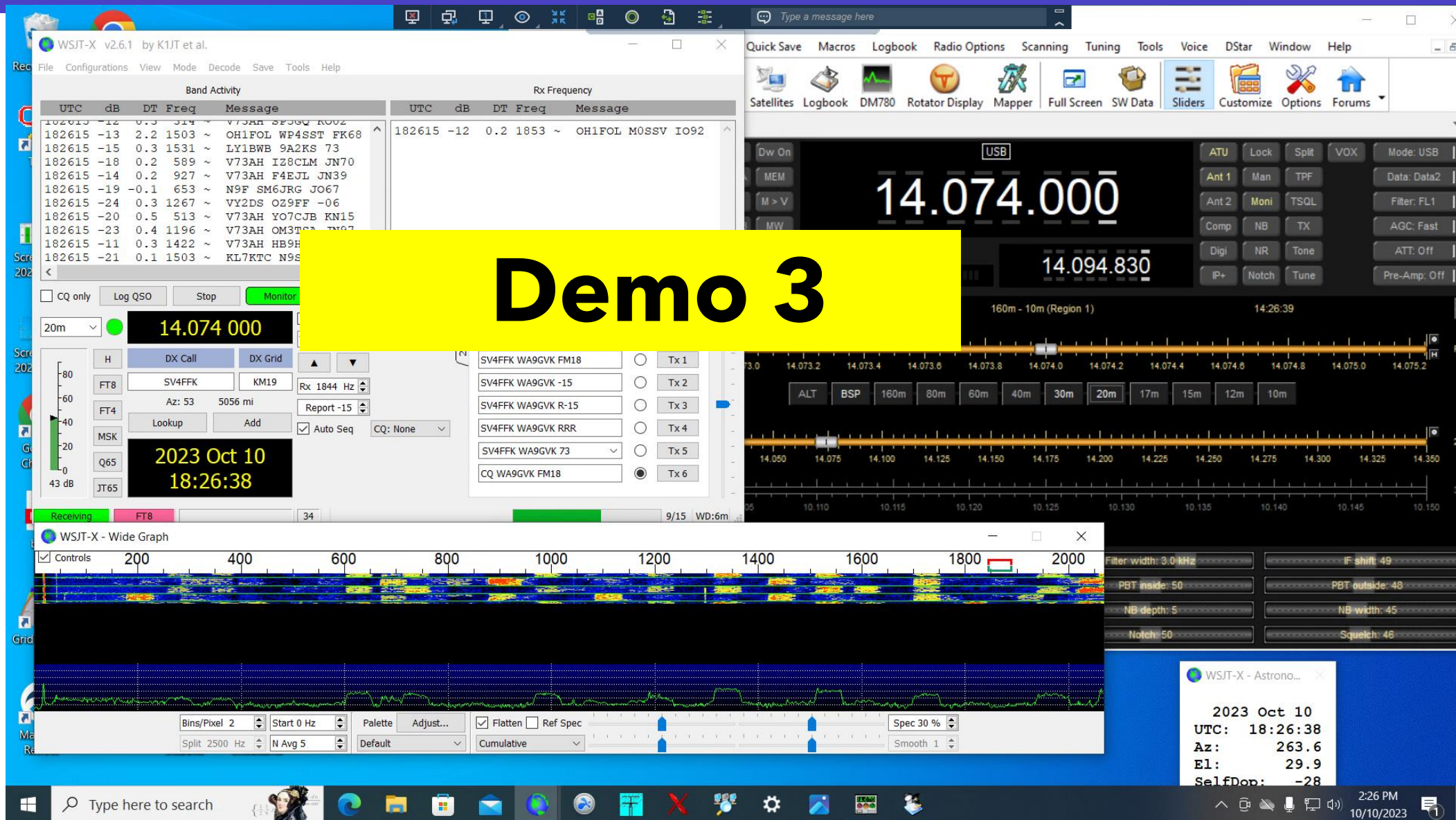
Dedicated Windows PC Screen (at Remote)



Applications Turned On (seen by remote)



Applications Turned On (seen by remote)

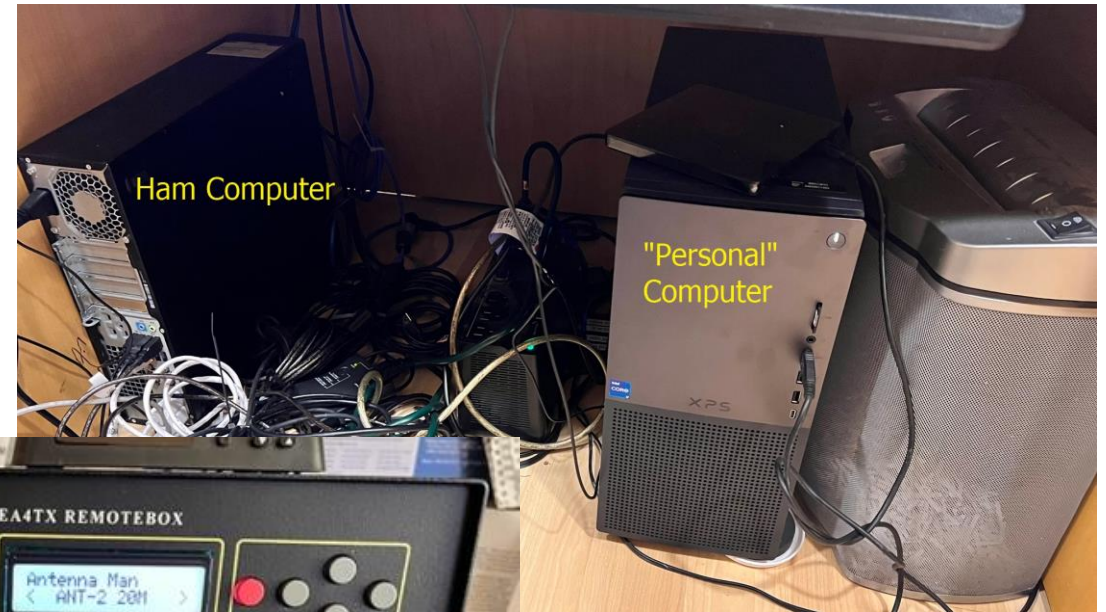


Virginia Home QTH

Desktop



Under the Desk



Rig



Arizona Remote Station

Desktop



Under the Desk



Hardware: QTH Windows Desktop PC

Why?

- Need computer that reboots easy in a software freeze; laptops don't because of battery.
- For security reasons, the PC will only have ham apps; not contain personal info.

Type & Cost

- Refurbished Window 10 Desktops cost about \$200
- Available at Microcenter and Newegg

Required Modification

- Change BIOS to disable front power switch. Computer must turn on with application of AC power

My PC - \$179

- Intel Core i5 6500 3.2GHz Processor
- **16GB** DDR4-2133 RAM
- 256GB **SSD**
- Intel HD Graphics 530
- Windows 10 Pro
- **2 DisplayPorts**
- HP ProDesk 600 G2 SFF Desktop



Hardware: EA4TX Remote Box

Why?

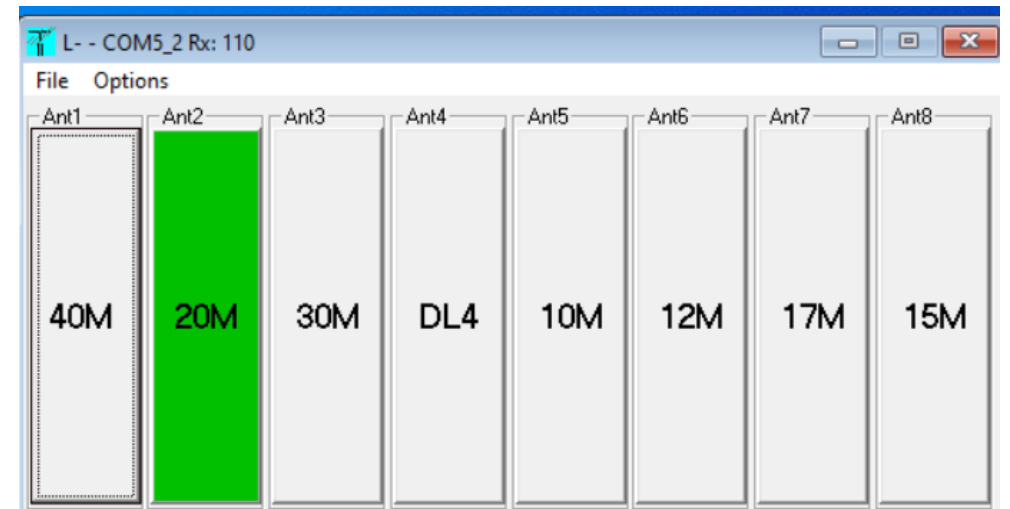
- Need control method to switch antennas to track rig frequency band either automatically or manually by remote control
- Compatible with DX Engineering RR8A-HP Remote Antenna Switch

Type & Cost

- EA4TX sold by DX Engineering
- Replaces CC-8 Manual Control Console
- \$186

Compatibility

- Rigs: Ameritron, Yaesu, Elecraft, ICOM
- Software: Win-Test, N1MM, DXlog, Ham Radio Deluxe, SwissLog, OmniRig



Hardware: Automatic Network Rebooting

Why?

- Need automated method to restore internet in home QTH when modem and/or router disconnects or freezes

Solution

- Automated power switch that senses loss of internet and responds by turning off power to modem and router, and then sequentially restores power to modem and then to router
- MSNSwitch Internet Enabled IP Remote Power Switch with Reboot - (Model UIS-622b)
- \$100



Hardware: PC Rebooting

Why?

- Need method to remotely restart frozen computer at home QTH

Solution

- Remote controlled WiFi power switch to turn off, then on, Windows computer at home QTH
- Controlled by app on a smartphone
- Change BIOS on Windows PC to allow it to start without pressing front button
- ezOutlet5 - Internet Enabled IP & WiFi Remote Model (EZ-72b)
- \$80
- Many “smart plug” cheaper solutions available



Software: Desktop Sharing

Why?

- Critical software to allow screen sharing through activation and remote viewing of applications on home QTH PC.
- Many apps used to be free but those days are gone

Solution

- Splashtop Business Access Performance (\$139/yr) –
 - Very easy to use
 - Doesn't require modification of home QTH Windows PC to bypass starting security PIN
 - Works even when home network IP address changes.
 - Works on Macs, Androids, iPhones and iPads.
- Cheaper solutions are available;
 - Splashtop Business Access Solo (\$60) – no mic audio passthrough
 - RemotePC - \$18.38/yr
 - RealVNC - \$127/yr

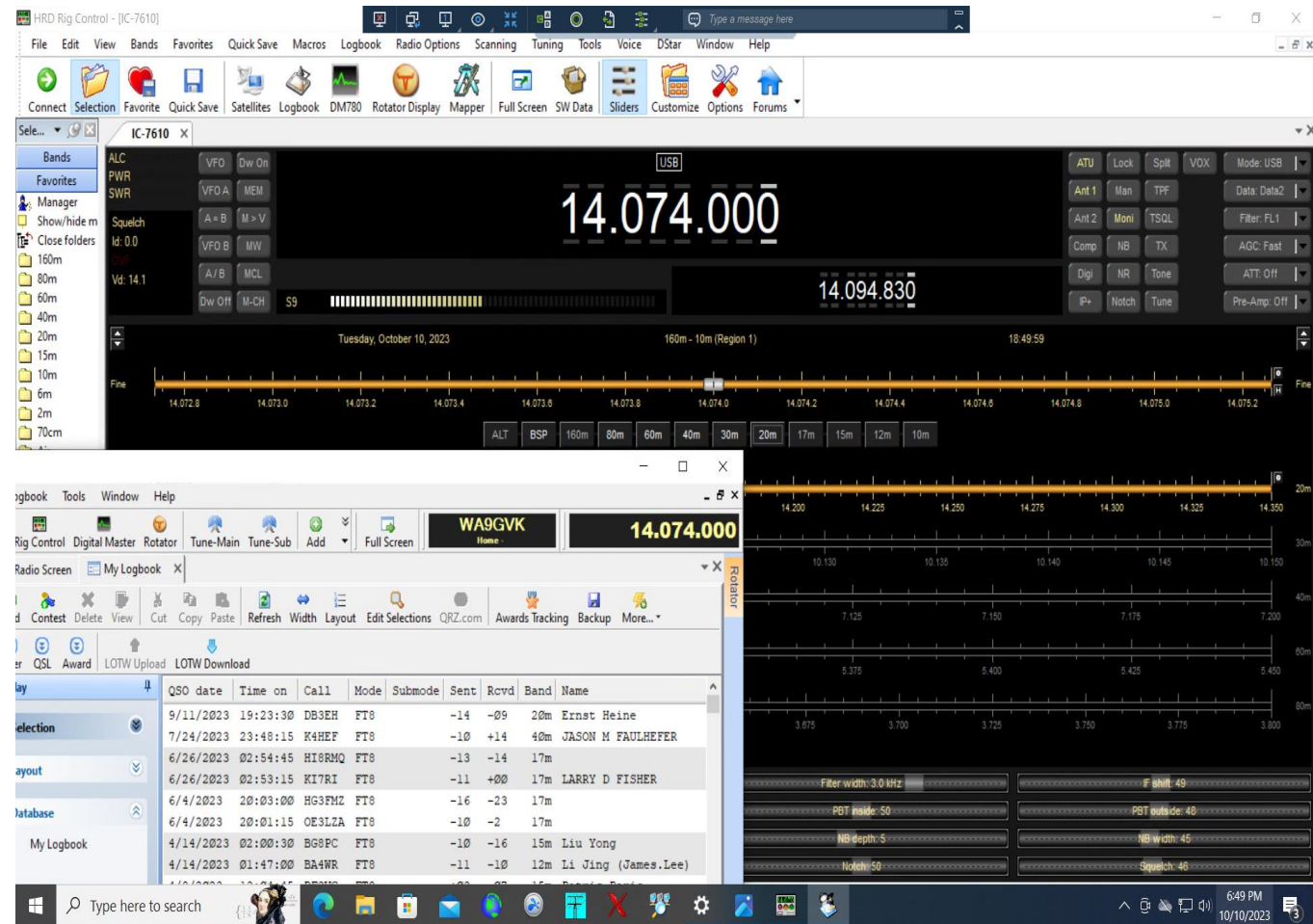
Software: Core Program for Home QTH PC

Why?

- Rig Control, Logging, and optional Rotator Control
- Can provide interface between WSJT-X (FT8) software and rig

Solution

- **Ham Radio Deluxe (HRD)** - \$100 one-time purchase; \$50/yr for upgrades & maintenance; many integrated applications; moderate learning curve
- Other solution combinations:
 - DXLab - Freeware
 - OmniRig - Freeware
 - Log4OM - Freeware
 - N1MM+ - Freeware
 - N3FJP - \$40



Some Solutions for Things I'm Not Doing

Rotor Control

- Ham Radio Deluxe (HRD)
- PstRotator software
- Rotor-EZ for Hy-Gain rotators
- Yaesu RotorCard/Illuminator
- Vibroplex Easy-Rotor-Control (ERC)

Power Amplifier Control

- Requires amplifier capable of interface to rig, computer, LAN network or web.

Summary

- Remote operations not difficult to set up but expect to make a modest \$\$ investment for both hardware and software.
- There are many remote-control ham apps for most every rig discoverable by Google search
- Install automatic method for home QTH network reboot and remote method to reboot home QTH computer upon freeze...unless you have a friend living nearby who has your key!





Bruce Brown
WA9GVK

brucejbrown
@gmail.com

Thank you

